

Sarah's Rose Garden

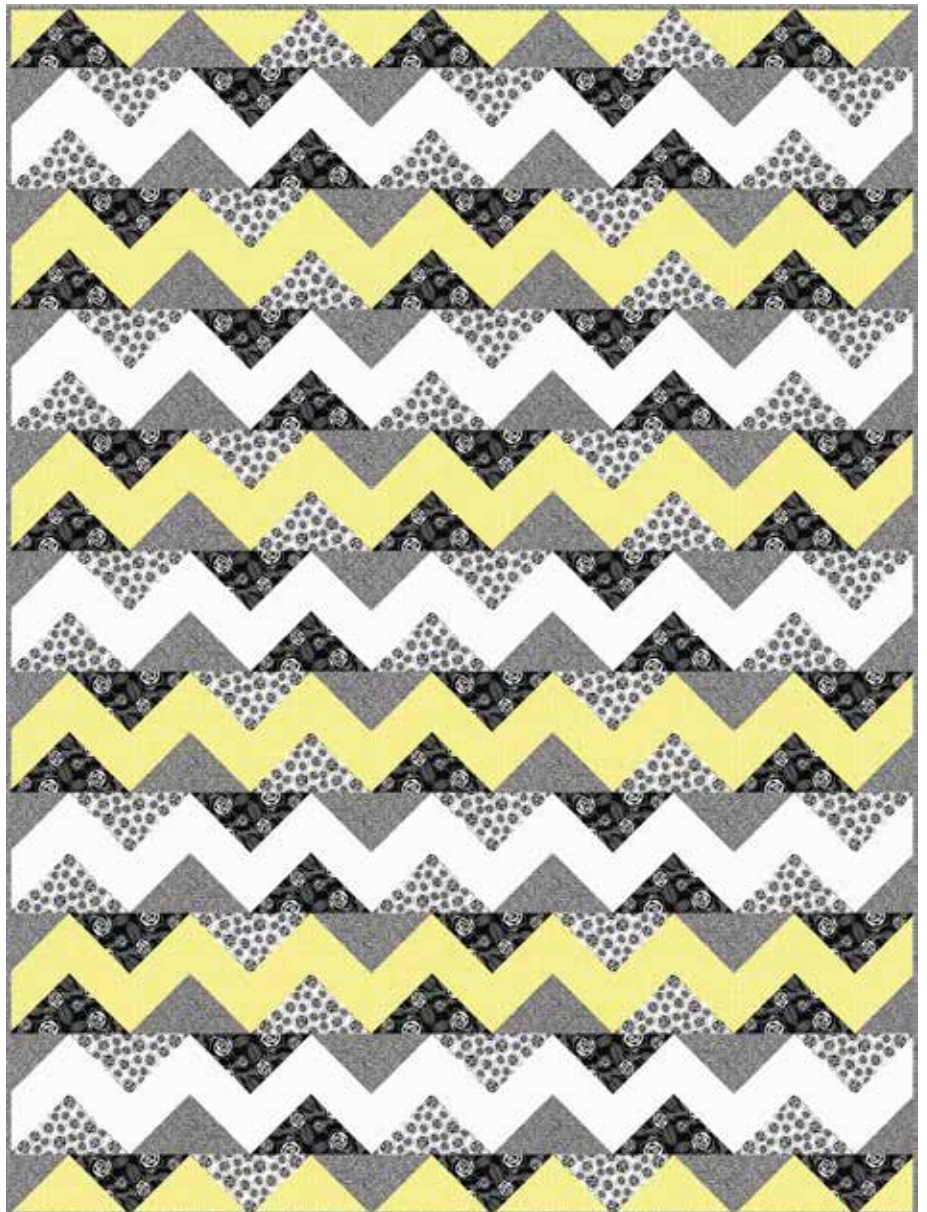
BY JESUS CRUZ



Hedge Rows Quilt Design:
Jean Ann Wright

Quilt Size: **60" x 80"**

andoverfabrics.com



About Sarah's Rose Garden

The images used for Sarah's Rose Garden were inspired by my mother, Sarah Cruz. We spent many hours watering, feeding, and pruning her many rose bushes. At one point she had as many as 50 rose bushes. Many of the floral images I carve and print have been and continue to be influenced by my mother's love of flowers. - *Jesus Cruz*

andover

•
•
•
•
makower uk
The Henley Studio

Free Pattern Download Available

1384 Broadway New York, NY 10018
Tel. (800) 223-5678 • andoverfabrics.com

11/1/14

Hedge Rows Quilt



Introducing Andover Fabrics new collection: **SARAH'S ROSE GARDEN** by Jesus Cruz

Quilt designed by Jean Ann Wright

Quilt finishes 60" x 80"

This sprightly row quilt uses a neutral-plus-yellow color scheme that is fresh and striking. Clever placement of fabrics results in zigzags that keep the eye moving across the quilt. Only two sizes of rotary-cut triangles are required.

Cutting Directions

Note: Read assembly directions before cutting patches.

All measurements are cut sizes and include 1/4" seam allowances. WOF designates the width of fabric from selvedge to selvedge (approximately 42" wide).

Fabric A

Cut (13) squares 9 1/4" x 9 1/4", cut in half diagonally twice to make 50 quarter-square triangles (2 are not needed)

Fabric B

Cut (13) squares 9 1/4" x 9 1/4", cut in half diagonally twice to make 50 quarter-square triangles (2 are not needed)

Fabric C

Cut (8) strips 2 1/2" x WOF for binding
Cut (10) squares 9 1/4" x 9 1/4", cut in half diagonally twice to make 40 quarter-square triangles
Cut (10) squares 4 7/8" x 4 7/8", cut in half diagonally to make 20 half-square triangles

Fabric D

Cut (18) squares 9 1/4" x 9 1/4", cut in half diagonally twice to make 70 quarter-square triangles (2 are not needed)
Cut (5) squares 4 7/8" x 4 7/8", cut in half diagonally to make 10 half-square triangles

Fabric E

Cut (18) squares 9 1/4" x 9 1/4", cut in half diagonally twice to make 70 quarter-square triangles (2 are not needed)
Cut (5) squares 4 7/8" x 4 7/8", cut in half diagonally to make 10 half-square triangles

Backing

Cut (2) panels 34" x 88", pieced to fit quilt top with overlap on all sides

Fabric Requirements

		Yardage	Fabric
Fabric A	setting	1 1/8 yards	7720-K
Fabric B	setting	1 1/8 yards	7721-KL
Fabric C	setting, binding	1 5/8 yards	7374-K
Fabric D	setting	1 5/8 yards	2847-WW
Fabric E	setting	1 5/8 yards	A-T-Flash
Backing		5 yards	7721-KL

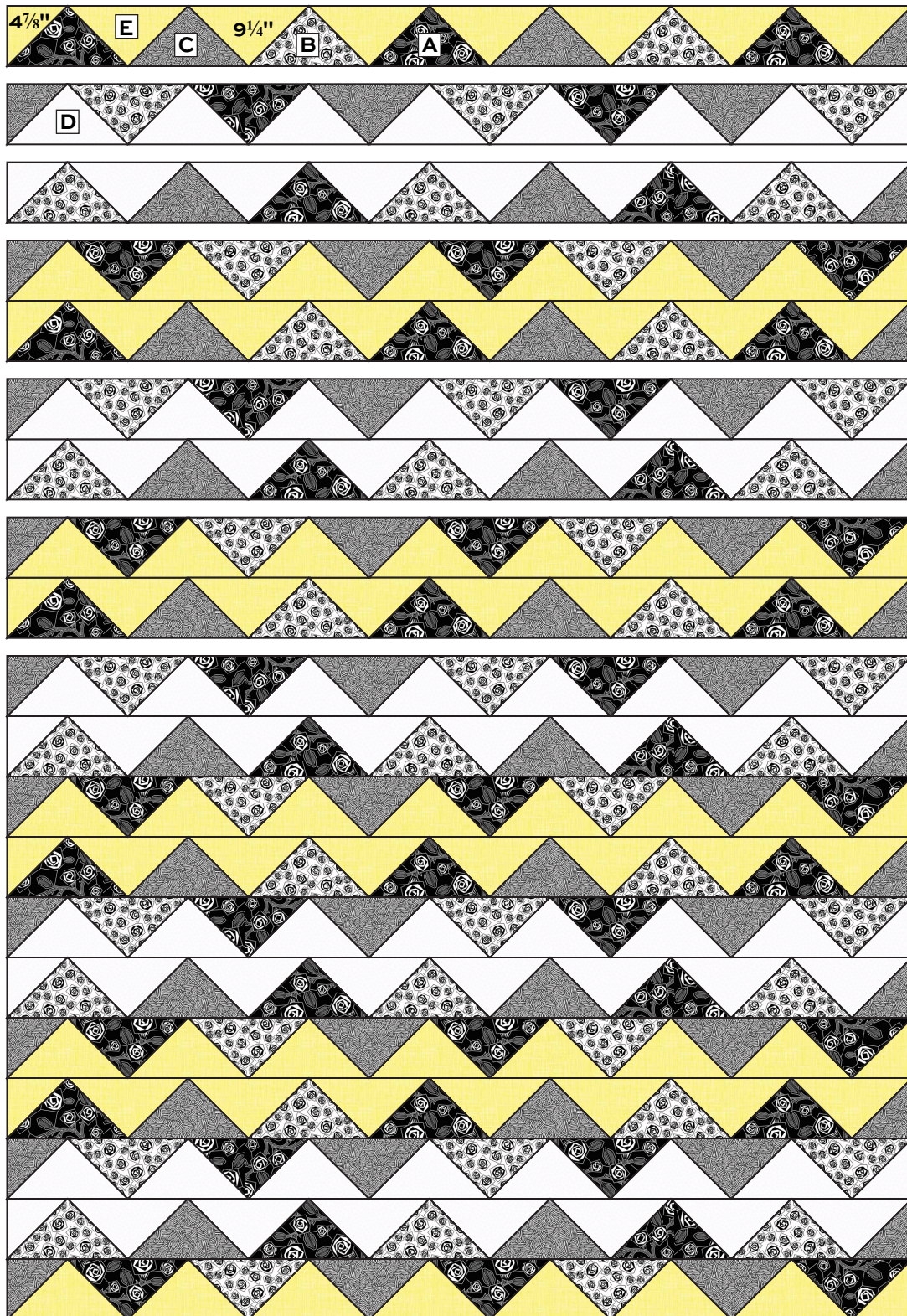
Making the Quilt

1. Draw the sewing lines on the wrong side of each patch for Row 1. Referring to the Quilt Diagram, arrange 3 Fabric A, 2 Fabric B, 2 Fabric C, and 7 Fabric E quarter-square triangles in a horizontal row, turning the yellow triangles upside down. Matching sewing lines, join the patches in the order shown. Sew a yellow half-square triangle to the left end and a Fabric C triangle to the right end. Press all seam allowances away from the yellow triangles. Make 10 rows exactly like this one.
2. Arrange and join the patches for Row 2 in the order shown, using 2 Fabric A, 3 Fabric B, 2 Fabric C, and 7 Fabric D quarter-square triangles. Sew a Fabric C half-square triangle to the left end and a Fabric D triangle to the right end. Press seam allowances away from the white triangles. Make 10 rows like this.
3. Referring to the Quilt Diagram, on a large flat surface or design wall, arrange the rows, alternating types from Step 1 and Step 2, and rotating them as needed to make the zigzag design. Once you are satisfied that the design is correct, join rows 2 and 3 to make the white zigzag unit. Join rows 4 and 5 to make the yellow zigzag unit. Continue in this manner to join rows in pairs. Finally, join all the pairs together, adding Row 1 at the top and Row 20 at the bottom.

Hedge Rows Quilt

Finishing the Quilt

4. Layer the quilt with batting and backing and baste. Quilt in the ditch around the patches, or quilt an overall pattern across the quilt. Bind to finish the quilt.



Quilt Diagram

Sarah's Rose Garden

BY JESUS CRUZ



7720-G



7720-K*



7720-R



7721-G



7721-KL*



7721-R



7374-GK

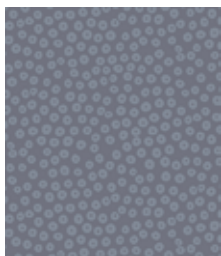


7374-K*

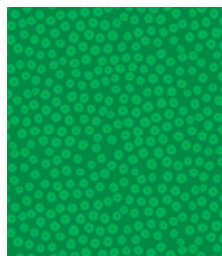


7374-RK

Blend with additional fabrics from Andover



2847-C



2847-G



2847-R



2847-WW*



A-T-ENVY



A-T-FLASH*

*Indicates fabrics used in quilt pattern. Fabrics shown are 25% of actual size.

andover



makower uk
The Henley Studio

Free Pattern Download Available

1384 Broadway New York, NY 10018
Tel. (800) 223-5678 • andoverfabrics.com